

Making U2 DataVu Repository Objects Available to Web Applications

You can access any U2 DataVu object (table, query, classic report, visual dashboard, or visual report) and embed it into a custom web page or portlet.

Create the URL to the U2 DataVu object

Create a URL address to the object using the following syntax:

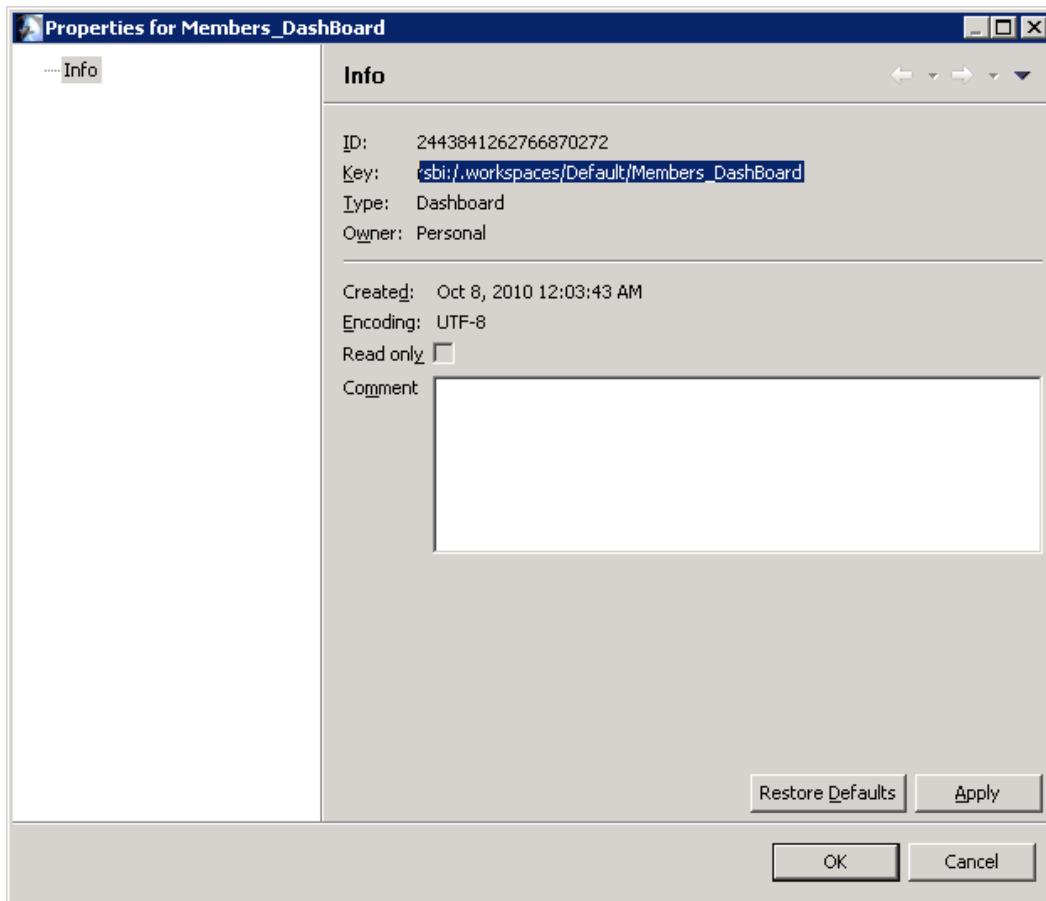
```
http://[server]:[port]/U2DataVu11/getObject?  
repository=[repositoryconnection]&key=[objectpath]  
&run=[yes|no]&user=[userID]&password=[password]  
&toolbar=[0|1]&&variable=[value]
```

Where:

repository	The name of the repository connection where the object resides, for example, a saved query.
key	The full path to the object in the repository. The path information can be obtained from the Key property value of the object in U2 DataVu Web. To view the Key property, click on the object in the Repositories or Workspaces views and refer to the Key property in the Properties view.
run	Specifies whether you will run the object and display data or open the object to display the SQL. This parameter only applies to query and procedure objects. All other objects open in run mode. Specify Yes to run a query or procedure and No to open the query or procedure.
user	Specifies the user ID that will be used when logging onto the repository. If a repository is secured, and you do not specify a default userID in the URL address, you will be prompted for a user ID using the Logon Information dialog.
password	Specifies the password that will be used for the user ID when logging onto the repository.
toolbar	Specifies whether or not the object's toolbar and the accompanying user interface data will be displayed around the embedded window. For example, if the embedded object is a query and you specify 1, the toolbar will be included, along with the query tab at the top of the window and the editor tabs on the bottom. If you specify 0, the toolbar is omitted and only the contents of the query results will be displayed in the embedded window.
variable	Specifies the value of a variable in a dashboard, query, or procedure. The variable name can be from 1 to 17 characters long and the value can be from 1 to 55 characters long. You can specify any number of variables and value. If there are variables in the dashboard, query, or procedure that are not given values, the user will be prompted for the values.

Example:

In this example, we have a saved dashboard, called Members_DashBoard. Its Key is rsbi:/.workspaces/Default/Members_DashBoard.

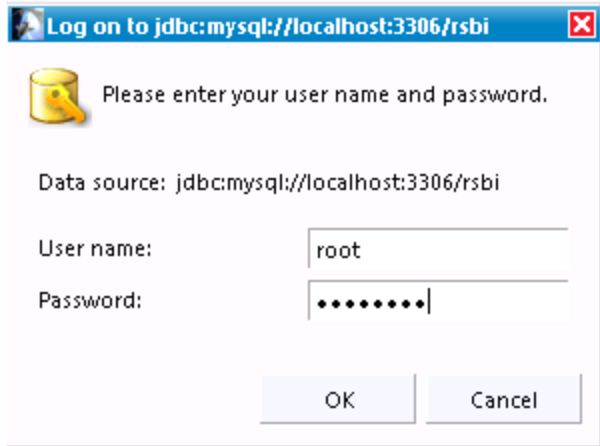


Our URL to access Members_DashBoard is:

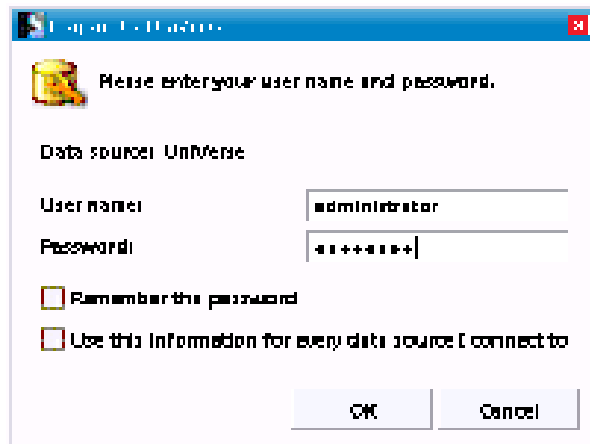
```
http://test.com:8080/U2DataVu11/getObject?repository=MySQL&key=rsbi:/.workspaces/Default/Members_DashBoard&run=yes&user=root&password=rootuser
```

Connect to the object

Paste the URL into a browser. When the connection is made the first prompt is to log into MySQL.



After the connection to MySQL is made you are prompted for the username and password to access the U2 data source.



Note: if you select **Remember the password** and later change your mind, you will need to locate the cookie for U2 DataVu and delete it. Refer to Microsoft for information about locating cookies.

The saved object is displayed.

http://tsdatavu.usco.ibm.com:8080/U2DataVu11/getObject?repository=MySQL&key=rsbi/.workspaces/D - Windows Internet Explorer

http://tsdatavu.usco.ibm.com:8080/U2DataVu11/getObject?repository=MySQL&key=rs...

HTML Default

Table Title

MEMBERS	Address	City	State	Zip
254	3014 AMERICAN PIE CROSSROAD	GARDEN VALLEY	ID	83622
401	1812 JODHPUR WALK	BLOOMINGTON	WI	53804
111	3545 HUNTSMEN PLAIN	TILLER	OR	97484
147	125 FOUR WHEEL STATION	ALTA VISTA	IA	50603
242	1527 IRIS CLUB	CORTEZ	FL	34215
314	2200 WHALEY MALL	BEVERLY HILLS	CA	90209
413	1189 LAFAYETTE PLAINS	CHODRANT	LA	71227
80	3791 LOGANBERRY PORTS	WOONSOCKET	RI	2895
119	3760 ROENOKE RUE	LATTA	SC	29565
135	666 CONCOURSE ANNEX	MARIETTA	OK	73448

Done Internet | Protected Mode: Off 100%